

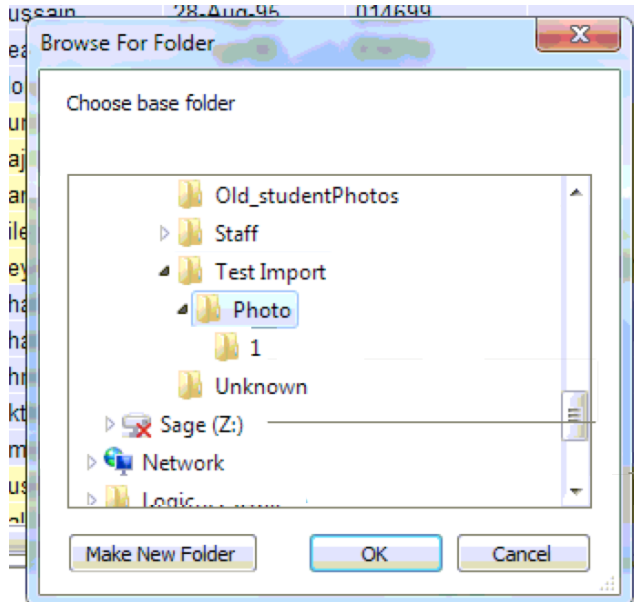
Reward-it

Reward-it

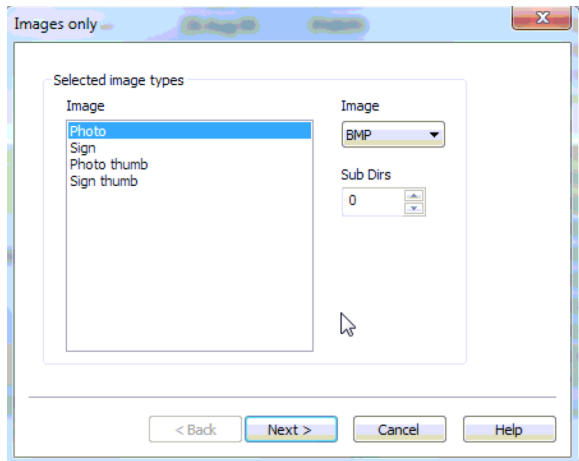
**Badgemaker 44/5400: Importing photos to
Badgemaker 4400 with existing records**

Reward-It Ltd

These steps outline how to import photos to a correct record (converting them to 'BLOBs') into a Badgemaker project with existing data



- 1) Create a folder named Photos with a subfolder inside named 1
- 2) The photos to be imported should be within this folder 1
 - Photos should be JPGs.
 - Photos should be under 300k
 - Photos should be named EXACTLY as the primary key in the Badgemaker project in order to import correctly
- 3) Click on SYSTEM > SETUP and tick 'Orphan images' box, Click OK
- 4) Click FILE > IMPORT and select PHOTOS folder
- 5) Highlight PHOTO in 'Selected image types'
- 6) Select file format to match your image files
- 7) Make sure 'Sub Dirs' = 0



- 8) Click Next
- 9) Click Finish

Photos from the folder you have directed the software to will import into the Badgemaker database as BLOB files and be stored within this