

PCP/PT: Printing error: Storage items error

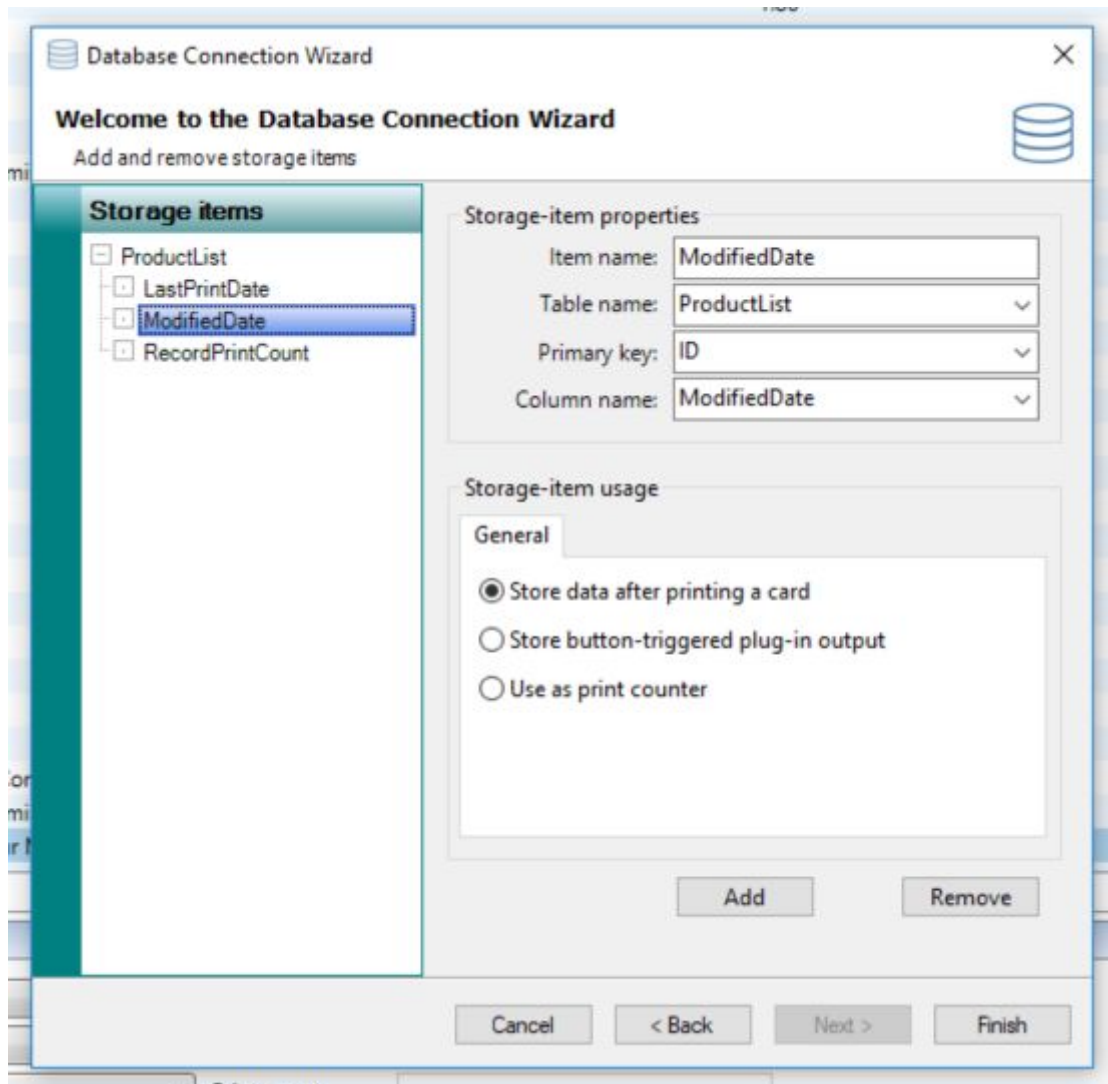
This procedure will fix a common error that appears when a user tries to print a user-created template within Price Card Pro or Price Tag

Open PCP/PT

Click on CONFIGURATION TAB

Click DATABASE SETUP

Click NEXT to reach **Add and remove storage items** (2nd to last tab - Click back if needed)



Look for storage items in the list on the left.

Highlight individually and click REMOVE.

Click Next

Click Finish

Try printing. Error should not display and job should be sent to the printer.